



CPS IIC Enclosure with window

Protection mode:

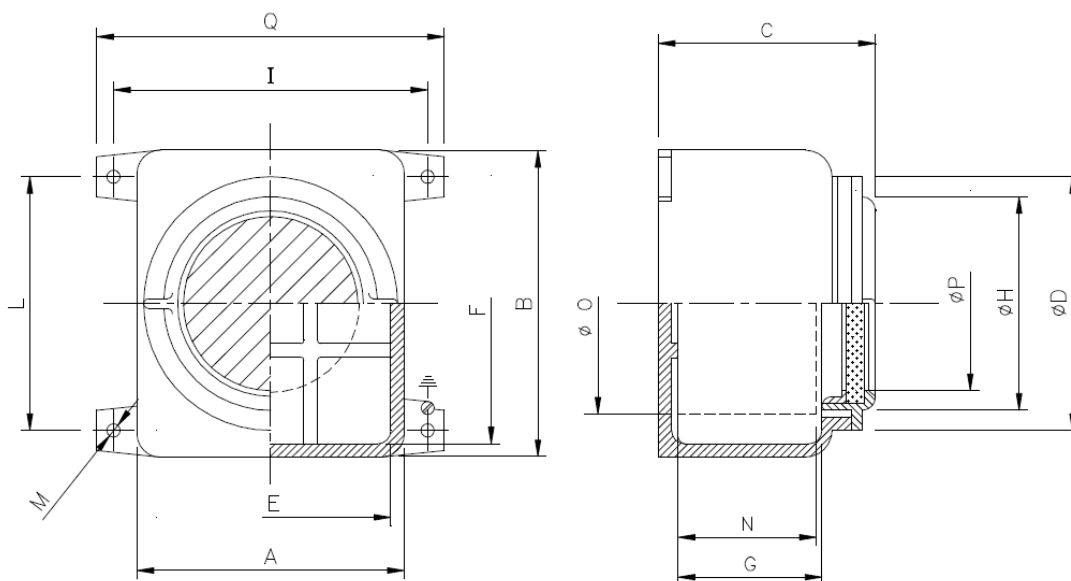
Type of protection: II 2GD Ex d IIC
 Class of temperature: T6-T4
 Zones : 1-2-21-22



Description:

Enclosure in light alloy with transparent part in thermoresistant toughened glass suitable for containing the electrical apparatuses of command, control, measure and regulation. External bolts and screws in stainless steel, RAL 2004 internal anti-condensate coating and RAL 7000 external epoxy coating with embossed effect.

Technical drawing:



Dimensions table:

Code	External dimensions					Internal dimensions				Fixing			El. apparatus		Port P	Weight (Kg)
	A	B	C	D	Q	E	F	G	H	I	L	M	N	O		
CPS 0	150	150	108	130	195	122	122	59	112	175	125	8	57	105	82	2,990
CPS 1	165	165	120	145	210	137	137	69	127	190	140	8	67	120	96	3,715
CPS 2	190	190	146	166	235	160	160	91	147	215	165	8	89	140	115	5,750
CPS 3	225	255	170	200	290	193	223	108	176	260	220	10	106	170	140	10,655
CPS 4	270	305	202	240	330	238	273	132	216	300	270	10	130	205	165	14,765
CPS 5	300	340	232	270	360	264	304	157	245	330	300	10	155	235	195	20,985